

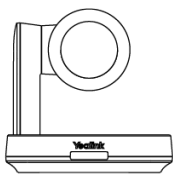
UVC84 Installation

Package Contents

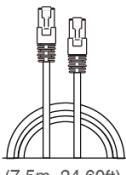


TIP

For the UVC84 unboxing video, please refer to [UVC84](#).
We recommend that you use the accessories provided or approved by Yealink. The use of unapproved third-party accessories may result in poor performance.

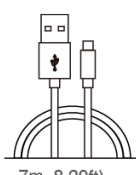


UVC84



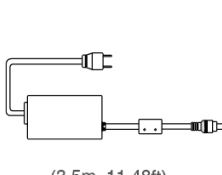
(7.5m, 24.60ft)

CAT5e UTP (RJ45 - RJ45) Cable



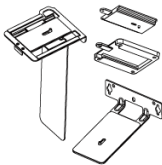
7m, 8.20ft)

USB 2.0 (A - B) Cable



(3.5m, 11.48ft)

Power Adapter (48V/0.7A)



Mounting Bracket



× 4

Φ6 * 30 mm, white, Polyamide



× 4

4*30 FAHOZN3+ (+)



× 5

1/4" -20 UNC



× 2

M3*5.8KM0ZN3+



VCR20 Remote Control



× 5

(20 * 200 mm)

Cable Ties



Quick Start Guide

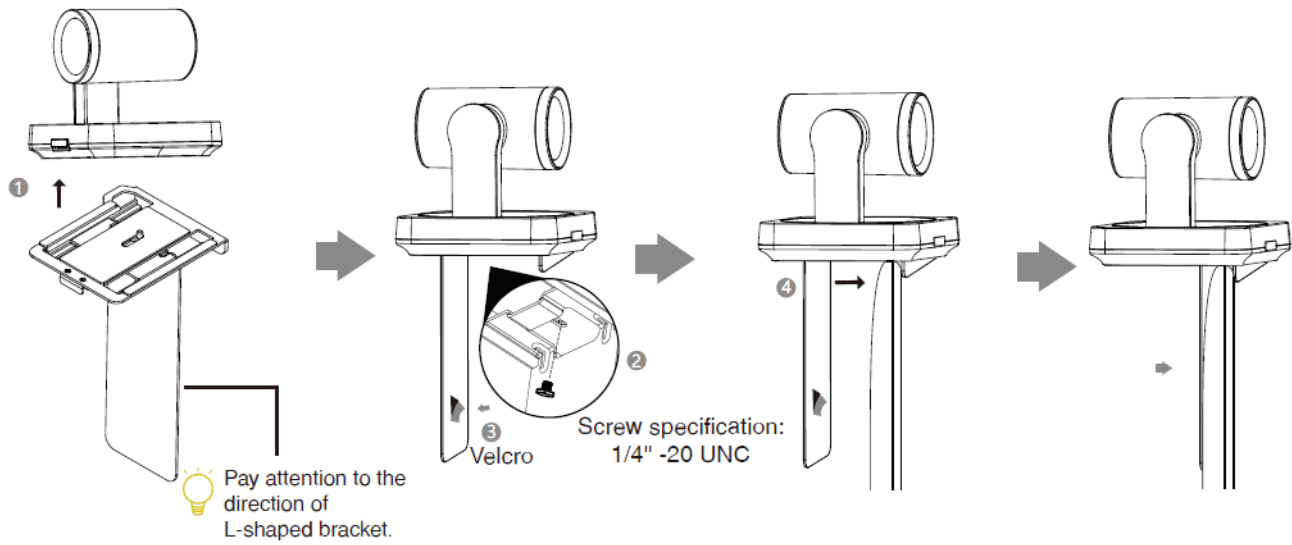
Install UVC84

- Put on a Flat Surface

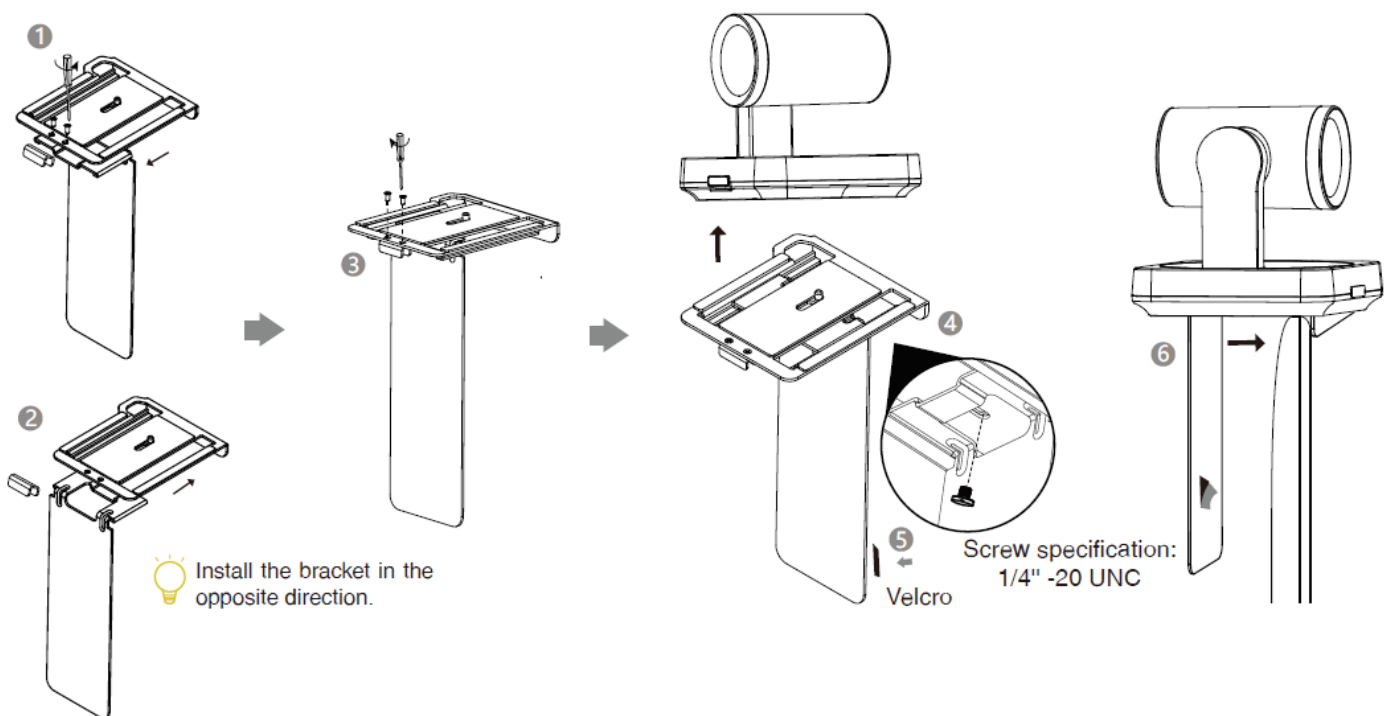
Place the UVC84 on the conference table, ensuring that the angle of inclination is no more than 5 degrees for proper operation.

- Mount on Top of a Display

Choose the following installation method when the thickness of the TV is between 0 mm and 70 mm.

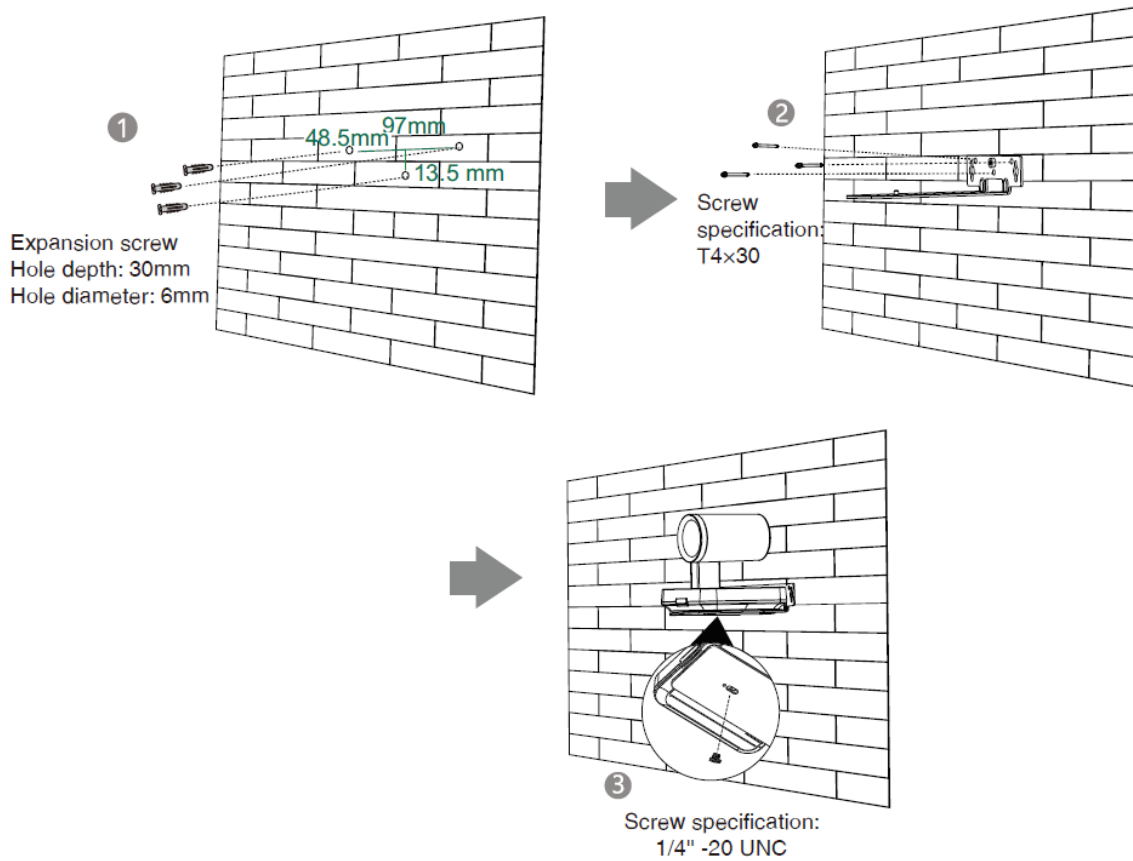


Choose the following installation method when the thickness of the TV is between 46 mm and 146 mm.

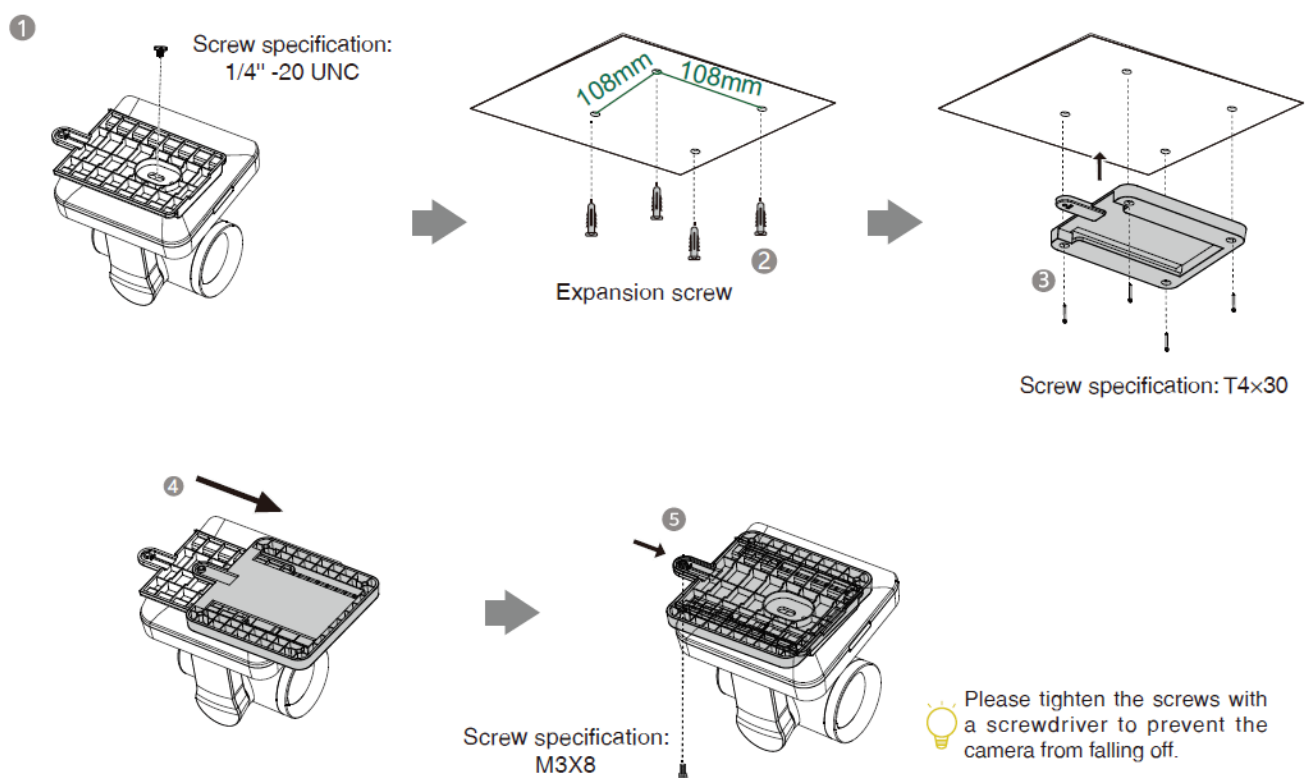


• Mount on the Wall

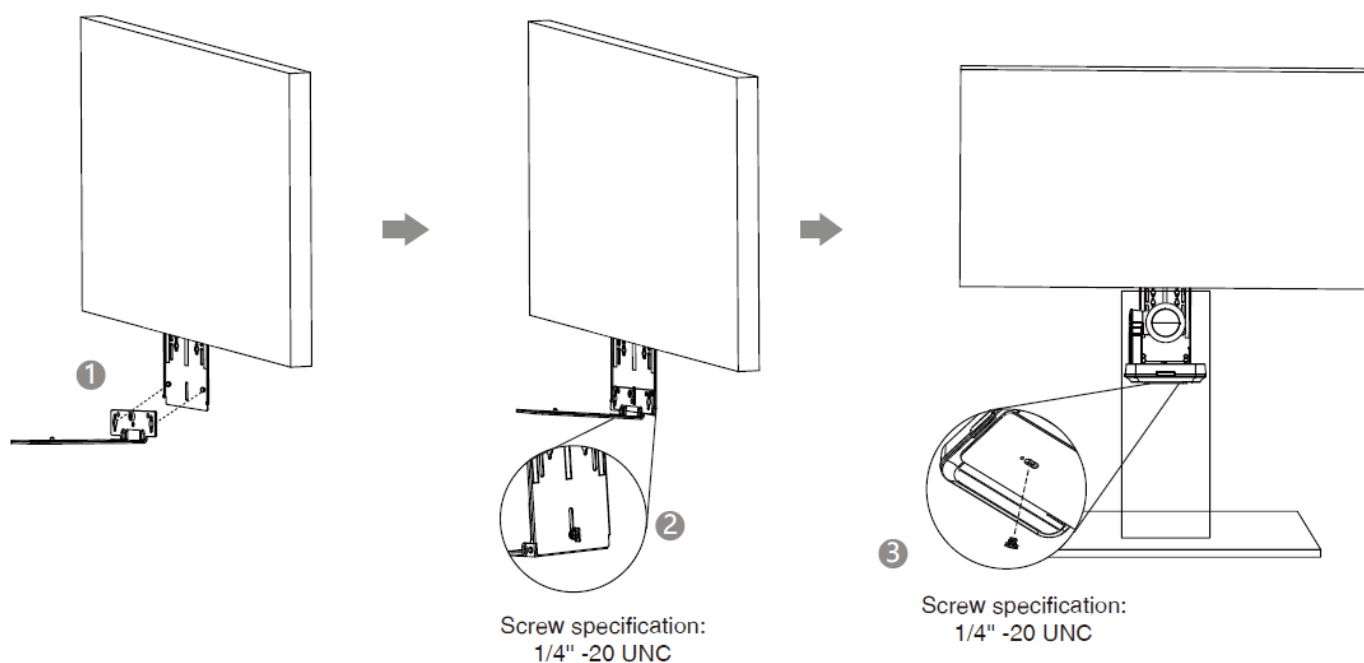
The recommended height is 1.55 m to 1.85 m above the ground.



• Mount on the Ceiling



• Mount onto a TV Mount

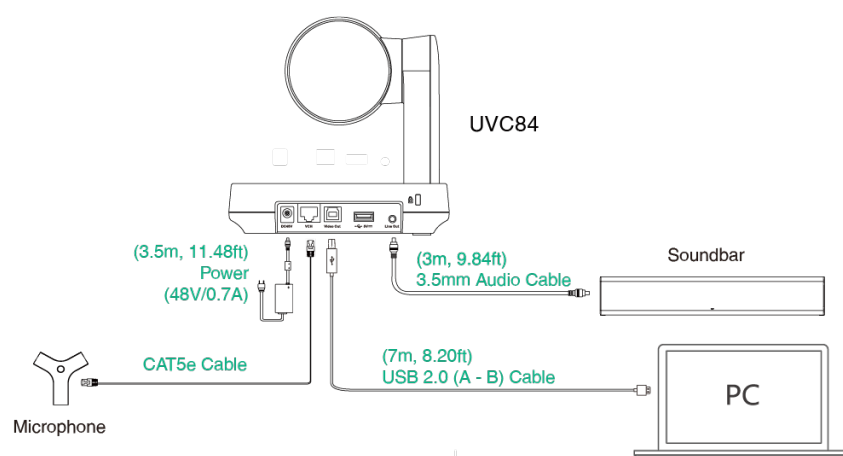


Hardware Interface

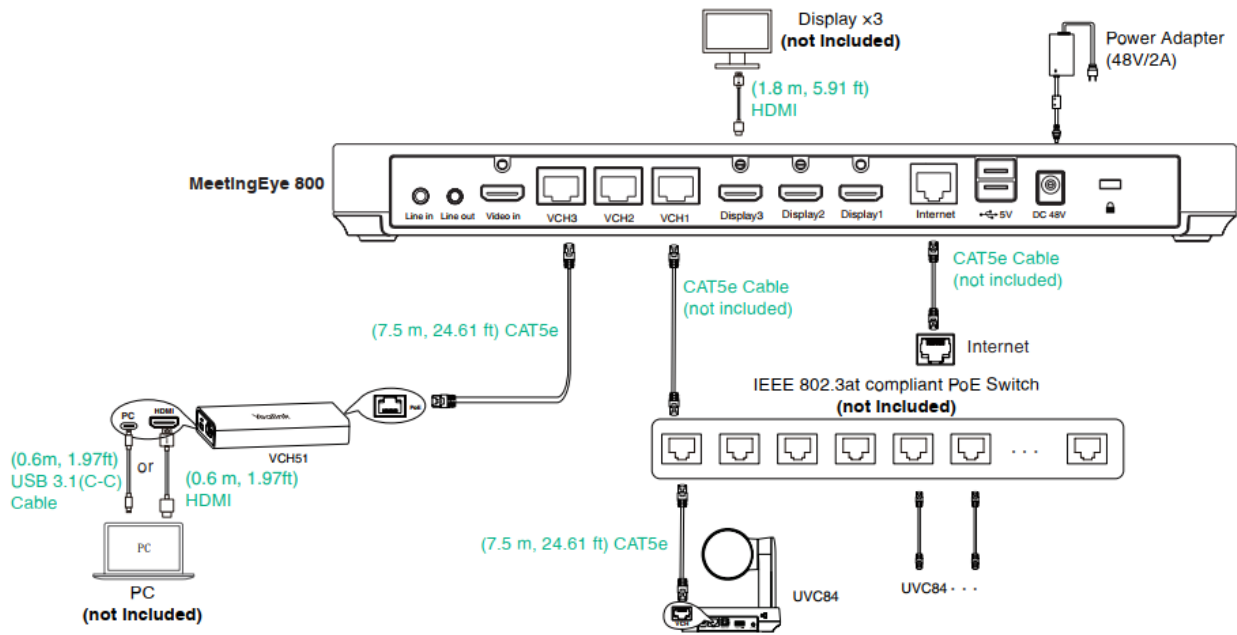
Please refer to [MVC Hardware Overview - UVC84 Camera](#) for details.

Connect UVC84

- **Connect to PC**



- **Connect to the Video Conference System**



NOTE

Not included accessory requirements:

- Display: Resolution of 1080p or higher with an HDMI port.
- Ethernet cable: CAT5e or higher.
- PoE switch: If using PoE to connect cameras, a PoE+ switch is required.
- PC: Must have an HDMI or USB-C (supporting DP protocol) port.

LED Indicator

LED Status	Description
Off	The UVC84 is powered off.
Solid Green	The UVC84 is active.
Solid Red	The UVC84 is in sleep mode.
Flash Red	The UVC84 is in recovery mode.
Flash Yellow	The UVC84 is upgrading firmware.